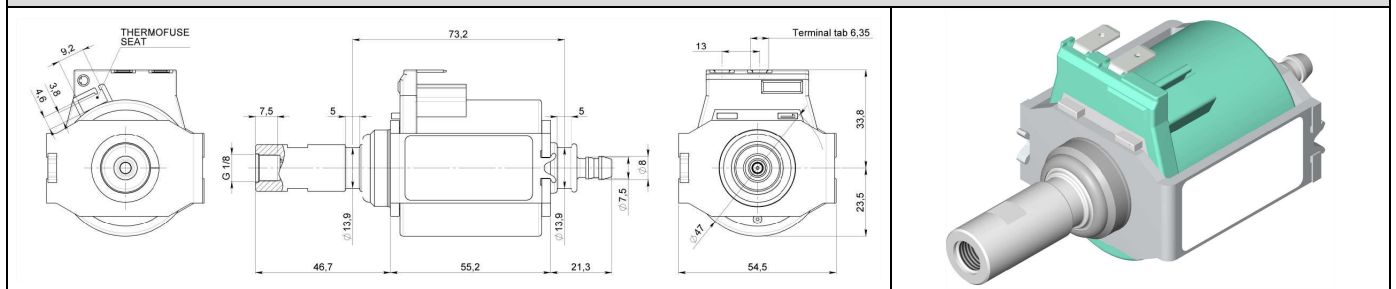


PUMP MODEL CP.04/ST/S/P or CP4SP

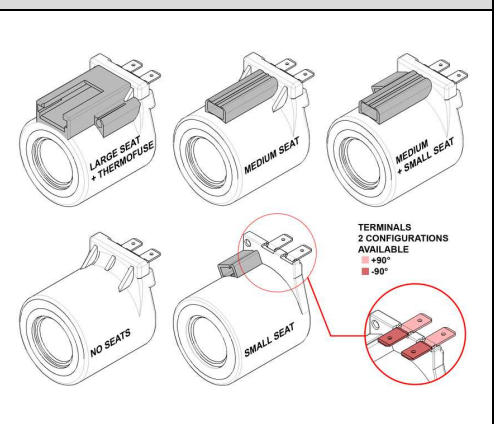
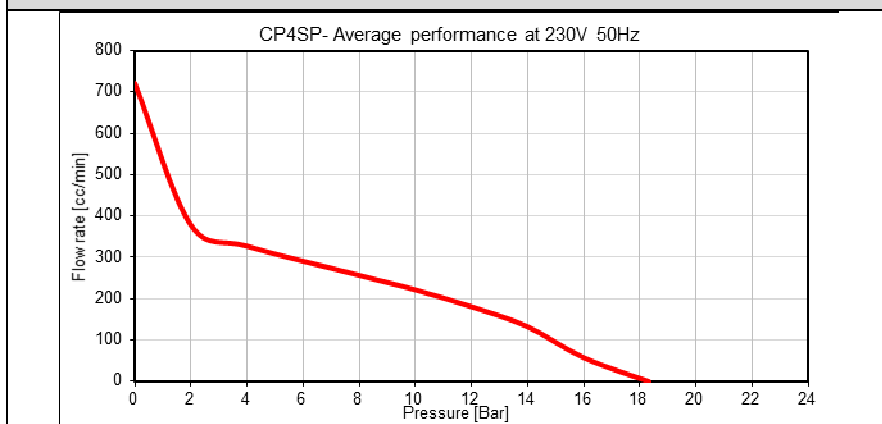
Voltage	Frequency	Power rating	Duty cycle	Thermal class	Integrated diode	Coil color	Approval
220-240 V ~	50/60 Hz	70 W	1 min ON – 1,5 min OFF	F	✓	□	Kema Keur
200-208 V ~	50/60 Hz	65 W	1 min ON – 1,5 min OFF	F	✓	■ ■	Kema Keur / UL
110-120 V ~	60 Hz	55 W / 65 W	1 min ON – 1,5 min OFF	A / F	✓	■ ■	UL
110-127 V ~	60 Hz	60 W	1 min ON – 1,5 min OFF	F	✓	■	Kema Keur
100-110 V ~	50/60 Hz	55 W	1 min ON – 1,5 min OFF	F	✓	■	Kema Keur

Layout drawing for dimensional purpose



Pressure-flow rate graph

Terminal orientation / thermal protection seat



Approvals

Safety	KEMA KEUR – DEKRA According EN 60335-1 and EN 60335-2-41 standard. UL according UL778 and C22.2 No. 108 Standard.	
Food approvals	Most significant international regulations (FDA, EU, Mercosur, China, Japan, Russian, etc..)	
Electrical insulation	Live parts to water – CLASS II Live parts to metal – CLASS I	

Functional characteristics

Working fluid	Potable grade water; max temperature Tm.35°C according to the approval.
Max environment working temperature	35°C
Operating noise	< 55 dB (A) at 230V 50Hz according to internal technical specification SPEC013.
Suggested storage conditions	Storage time 6 months at 10-30°C and humidity 20-80%.
Limit temperature device	The pump can be provided with thermofuse or thermostat.
Prescription	Dry working allowed only for the priming phase. Pump must be flushed before use.
Durability	5000 Cycles according cycle profile show. (15000 coffees brewing) Water temperature 30±5 °C. Back pressure 12 bar.

