



Series  
SFI-100, SFI-300,  
SFI-350, SFI-360,  
SFI-400, SFI-700

# MIDWEST Sight Flow Indicators

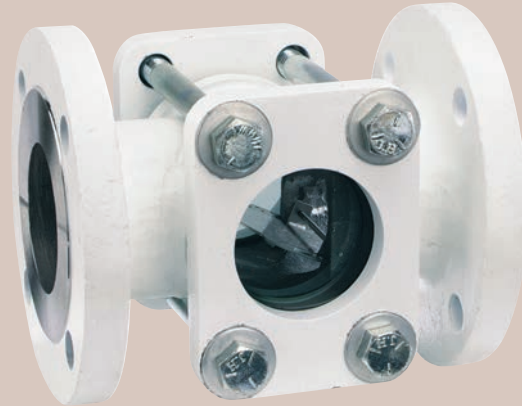
Inexpensive Protection for Expensive Equipment and Systems



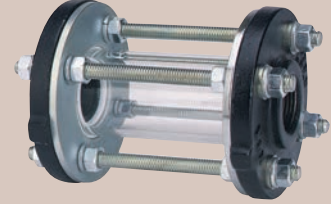
Model 100, 100MP



Model 300, 300MP



Model 360F



Model 400



Model 700

Midwest Sight Flow Indicators are manufactured of quality materials and safety tested to assure long, dependable service at economical prices. Available in window viewing style in the 100 and 300 Series and tube viewing style in the 400 and 700 Series with connection choices of female NPT, BSPP, or BSPT threaded and flanged. Series 700 has impeller and internal wipers for cleaning sight tube, which is perfect for fluids with suspended solids. Just rotate the glass tube and restore full 360° visibility without disrupting the flow.

#### Models

- 100 - Single window with impeller
- 300 - Double window with impeller
- 350 - Double window with no indicator
- 360 - Double window with flapper
- 400 - Tube type with no indicator
- 700 - Tube type with impeller and internal wipers to clean glass tube

#### Sight Flow Indicator Dimensions and Weight

Model	Body Size	Length	Depth	Height	Flange Diameter	Viewing Area Diameter	Weight lb (kg)
<b>100 Series</b>	1/4, 3/8	3.000 (76)	1.813 (46)	2.125 (54)	-	-	1.1 (0.5)
	1/2, 3/4	4.000 (102)	2.250 (57)	2.563 (65)	-	-	1.5 (0.7)
	1, 1-1/4	4.375 (111)	2.563 (65)	2.625 (67)	-	-	2.7 (1.2)
	1-1/2, 2	5.688 (144)	3.250 (83)	3.625 (83)	-	-	5.5 (2.5)
<b>300 Series</b>	1/4, 3/8	3.063 (78)	2.250 (57)	2.125 (54)	-	-	1.7 (0.8)
	1/2, 3/4	4.063 (103)	2.750 (70)	2.563 (65)	-	-	2.6 (1.2)
	1, 1-1/4	4.375 (111)	3.125 (79)	2.563 (65)	-	-	3.0 (1.4)
	1-1/2, 2	5.500 (140)	3.688 (93)	4.063 (103)	-	-	7.0 (3.2)
<b>700 Series</b>	1/4, 3/8	2.750 (70)	-	1.500 (38)	-	-	0.9 (0.4)
	1/2, 3/4	3.688 (94)	-	2.250 (57)	-	-	2.4 (1.1)
	1, 1-1/4	4.875 (124)	-	2.750 (70)	-	-	5.1 (2.3)
	1-1/2	-	-	(across flats)	-	-	-
<b>400 Series</b>	1/2	4.500 (144)	-	-	3.500 (89)	1.500 (38)	3.8 (1.7)
	3/4	5.125 (130)	-	-	3.875 (98)	1.750 (44)	4.8 (2.2)
	1	5.625 (143)	-	-	4.250 (108)	2.000 (51)	6.2 (2.8)
	1-1/4	5.750 (146)	-	-	4.625 (117)	2.000 (51)	7.6 (3.5)
	1-1/2	5.875 (149)	-	-	5.000 (127)	2.500 (64)	8.7 (4.0)
	2	6.125 (156)	-	-	6.000 (152)	3.000 (76)	13 (6.0)
<b>400F Series</b>	1	5.000 (127)	-	-	4.250 (108)	2.000 (51)	7 (3.2)
	1-1/4	5.125 (130)	-	-	4.625 (117)	2.000 (51)	8 (3.6)
	1-1/2	5.250 (133)	-	-	5.000 (127)	2.500 (64)	12 (5.5)
	2	5.370 (137)	-	-	6.000 (152)	3.000 (76)	14 (6.4)
	3	5.750 (146)	-	-	7.500 (191)	4.000 (102)	23 (10.4)
<b>300F Series</b>	1-1/2	6.375 (162)	-	-	5.000 (127)	2.313 (58)	12 (5.5)
	2	6.500 (165)	-	-	6.000 (152)	2.313 (58)	16 (7.5)
	3	8.875 (225)	-	-	7.500 (191)	3.000 (76)	38 (17)
	4	10.250 (260)	-	-	9.000 (229)	4.000 (102)	56 (25)
	6	12.500 (318)	-	-	11.000 (279)	6.000 (152)	120 (55)

Dimensions are in inches (mm)

**SFI-100 & SFI-300 SERIES**

**Window Style with Threaded Connections**

**SPECIFICATIONS**

**Service:** Compatible gases and liquids.

**Wetted Materials:** Window: Tempered glass; Body: Bronze or 316 SS; Gasket: Buna-N, fluoroelastomer or PTFE; Indicator: ABS or 316 SS impeller (100 and 300), 304 SS or 316 SS flapper (360).

**Temperature Limit:** 200°F (93°C); 120°F (48°C) on W2 option.

**Pressure Limit:** 125 psig (8.62 bar), 150 psig (10.34 bar) on "MP" models.

**Connections:** Threaded.

**Mounting Orientation:** Horizontal or vertical; 360: Horizontal only.

<b>Example</b>	<b>SFI</b>	<b>300</b>	<b>SS</b>	<b>2</b>	<b>G2</b>	SFI-300SS-2-G2 Sight Flow Indicator; double window, temper glass, Fluoroelastomer gaskets, 316SS body, ABS impeller, 2 inch female NPT connections.
<b>Model Designator</b>	SFI					Sight flow indicator, tempered glass standard, Buna-N gaskets standard, female NPT connections standard.
<b>Body Style</b>		100 300 350 360				Single window, bronze body, ABS Impeller Double window, bronze body, ABS Impeller Double window, bronze body, no moving indicator Double window, bronze body, 304SS flapper
<b>Body Options</b>			SS MP			316SS body option for 300, 350, 360 150 psig maximum pressure option, includes Fluoroelastomer gaskets
<b>Body Size</b>				1/4 3/8 1/2 3/4 1 1-1/4 1-1/2 2		1/4 inch connection size 3/8 inch connection size 1/2 inch connection size 3/4 inch connection size 1 inch connection size 1-1/4 inch connection size 1-1/2 inch connection size 2 inch connection size
<b>Options</b>					W2 G1 G2 S2 S3 I1 I2 I3 F1 BSPT BSPP	Plexiglass window PTFE gasket Fluoroelastomer gasket 316SS Shaft (Not on 350 Model) Monel Shaft (Not on 350 Model) ABS impeller with bronze bushing (Not on 350, 360) 316SS impeller (Not on 350, 360) No impeller (100 only) 316SS Flapper (360 only) BSPT BSPT threads BSPP BSPP threads

(Maximum flow on impeller models: 5 FPS with liquids, 5000 FPM with gases)

**SFI-300F SERIES**

**Window Style with Flanged Connections**

**SPECIFICATIONS**

**Service:** Compatible gases and liquids.

**Wetted Materials:** Window: Tempered glass; Body: Carbon steel or 316 SS; Gasket: Buna-N, fluoroelastomer or PTFE; Indicator: 316 SS flapper (360).

**Temperature Limit:** 200°F (93°C).

**Pressure Limit:** 150 psig (10.34 bar).

**Connections:** Flanged.

**Mounting Orientation:** Horizontal or vertical; 360: Horizontal only.

<b>Example</b>	<b>SFI</b>	<b>360FSS</b>	<b>1-1/2</b>	<b>G1</b>	SFI-360FSS-1-1/2-G1 Sight Flow Indicator; double window, tempered glass, PTFE gasket, 316SS body, 304SS flapper, 1-1/2 inch raised face flange connections
<b>Model Designator</b>	SFI				Sight flow indicator, double window, tempered glass, Buna-N gaskets standard, raised face flange connections
<b>Body Style</b>		350FCS 350FSS 360FCS 360FSS			Carbon steel body, no moving indicator 316SS body, no moving 316SS indicator Carbon steel body, 316SS flapper 316SS body, 316SS flapper
<b>Body Size</b>			1-1/2 2 3 4 6		1-1/2 inch raised face flange connection size 2 inch raised face flange connection size 3 inch raised face flange connection size 4 inch raised face flange connection size 6 inch raised face flange connection size
<b>Options</b>				G1 G2	PTFE gasket Fluoroelastomer gasket

**SFI-700 SERIES**

**Tube Style with Threaded Connections**

**SPECIFICATIONS**

**Service:** Compatible gases and liquids.

**Wetted Materials:** Tube: Tempered borosilicate; Body: Brass or 316 SS; Gasket: Fluoroelastomer; Indicator: Acetal.

**Temperature Limit:** 212°F (100°C).

**Pressure Limit:** 230 psig (15.86 bar).

**Connections:** Threaded.

<b>Example</b>	<b>SFI</b>	<b>700SS</b>	<b>1-1/2</b>	SFI-700SS-1-1/2 Sight Flow Indicator; tube type with 8 blade Acetal impeller and integral wipers to clean tube interior, tempered borosilicate tube, Fluoroelastomer gaskets, 316SS body, 1-1/2 inch female NPT connections
<b>Model Designator</b>	SFI			Sight flow indicator, tube type with 8 blade Acetal impeller and integral wipers to clean tube interior, tempered borosilicate tube, Fluoroelastomer gaskets
<b>Body Style</b>		700 700SS		Brass body 316SS body
<b>Body Size</b>			1/4 3/8 1/2 3/4 1 1-1/4 1-1/2	1/4 inch female NPT connection size 3/8 inch female NPT connection size 1/2 inch female NPT connection size 3/4 inch female NPT connection size 1 inch female NPT connection size 1-1/4 inch female NPT connection size 1-1/2 inch female NPT connection size
<b>Options</b>				BSPT BSPT threads BSPP BSPP threads

**SFI-400 SERIES**

**Tube Style with Threaded or Flanged Connections**

**SPECIFICATIONS**

**Service:** Compatible gases and liquids.

**Wetted Materials:** Tube: Borosilicate; Body: Cast iron or 316 SS; Gasket: PTFE.

**Temperature Limit:** 200°F (93°C).

**Pressure Limit:** 50 psig (3.45 bar).

**Connections:** Threaded or flanged.

<b>Example</b>	<b>SFI</b>	<b>400SS</b>	<b>1-1/2</b>	SFI-400SS-1-1/2 Sight Flow Indicator; tube type, borosilicate tube, PTFE gaskets, 316SS body, 1-1/2 inch female NPT connections
<b>Model Designator</b>	SFI			Sight flow indicator, tube type, borosilicate tube, PTFE gaskets
<b>Body Style</b>		400CI 400SS 400F		Female NPT connections, cast iron body (only for 1 through 2 inch sizes) Female NPT connections, 316SS body Raised face flange connection, 316SS body (only for 1 inch and up sizes)
<b>Body Size</b>			1/2 3/4 1 1-1/4 1-1/2 2 3 4	1/2 inch connection size 3/4 inch connection size 1 inch connection size 1-1/4 inch connection size 1-1/2 inch connection size 2 inch connection size 3 inch connection size 4 inch connection size

(Best for use in vertical pipelines where there are no mechanical strains)